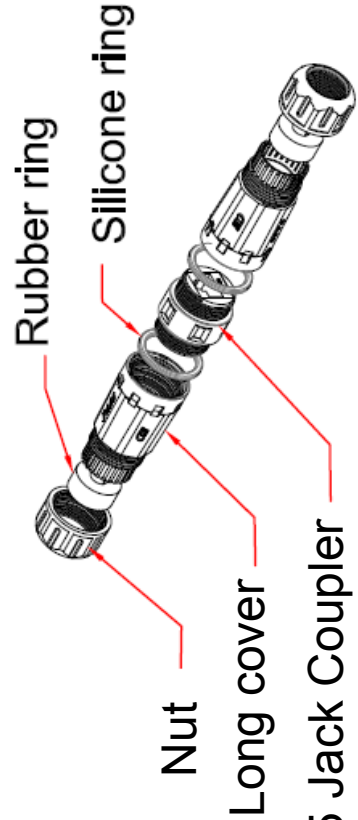
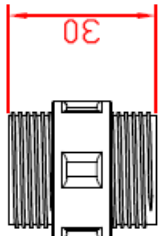
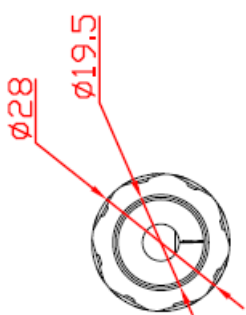
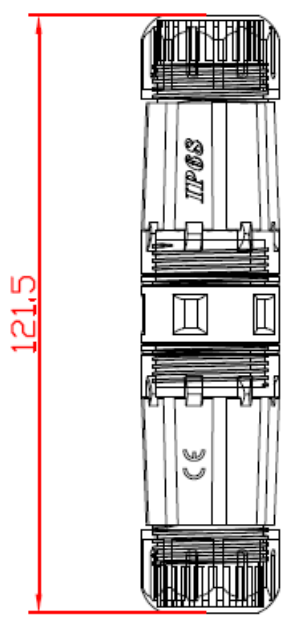


REV.	DESCRIPTION	APPROVED BY	DATE	ECN NO.
A	RELEASE	KUNG	2017.05.15	
B				
C				

* SUBJECT TO CHANGE WITHOUT NOTICE



NOTES:

ELECTRICAL:

- VOLTAGE RATING: 125 VAC RMS
- CURRENT RATING: 1.5AMP
- CONTACT RESISTANCE: 100MILLIOHMS MAX
- INSULATION RESISTANCE: 1000 MEGOHMS MIN @500 VDC
- DIELECTRIC STRENGTH: 750 VAC RMS 60Hz, 1MIN

ENVIRONMENTAL:

- STORAGE: -40° TO +85°
- OPERATION: -20° TO 70°

MECHANICAL:

- HOUSING MATERIAL: PA66
- INSERT MATERIAL: FAME RETARDANCY PBT
- PCB MATERIAL: FR-4 T=1.6mm
- RJ45 JACK CONTACT: PHOSPHOR BRONZE WITH NICKEL PLATED GOLD PLATED
- RJ45 JACK LIFE: 750 TIMES MIN
- Waterproof grade: IP68
- CABLE OD: 5.0 - 7.5mm

Cat.6 RJ45 Jack Coupler

DRAWN	CHK'D	KU	APP'D	KUNG	UNIT	MM	TOLERANCE	x ±0.25 .xx ±0.20 .xxx ±0.10 .xxxx ±0.03 ANGLE ±1°		JKL TECHNOLOGY CO., LTD.		TITLE	CAT.6 STP RJ45 OUTDOOR CABLE JOINER , IP68.	SHEET	⊕
										SCALE	1:1	PART NO.	RJ45S-C6-BK	DWG NO.	AP037-S6