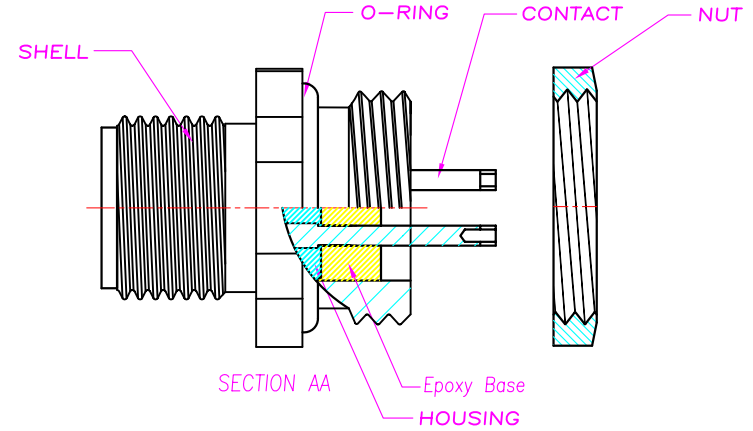
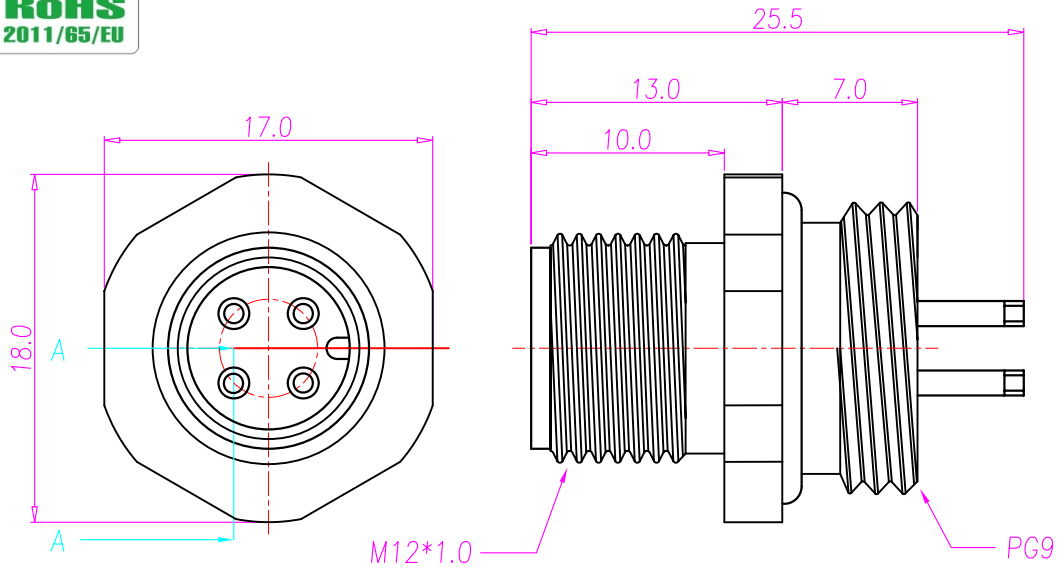




REV.	DESCRIPTION	APPROVED BY	DATE	ECN NO.
A	RELEASE	KUNG	22/12/08	
B				
C				



- MATERIAL :
 - HOUSING : PBT UL94V-0 ; COLOR : BLACK
 - CONTACT : BRASS
 - SHELL: BRASS
 - NUT : BRASS
 - O-RING :NBR; COLOR : BLACK
 - EPOXY BASE :EF400A&EF400B ;COLOR: BLACK
- FINISH :
 - CONTACT : 10 MICRO INCHES MIN. GOLD PLATED
UNDER PLATE : NICKEL
 - SHELL : NICKEL PLATED 60u" ~ 100u" OVER ALL
- ELECTRICAL SPECIFICATION :
 - Rated current : 5A
 - Voltage :125V
 - Water proof: IPX8
- Environmental :
 - Operation Temperature : -40 °C~85°C

PANEL CUT-OUT

DRAWN	HULK	APP'D	KUNG	UNIT	MM	TOLERANCE		JKL TECHNOLOGY CO., LTD.	TITLE	M12 4 PIN MALE REAR PANEL MOUNT , PG9		SHEET	
CHK'D				SCALE	1:1	.x ±0.20 .xx ±0.10 .xxx ±0.05 .xxxx ±0.03 ANGULA ±1°			PART NO.	WP-04M2-25	DWG NO.	QC3929	