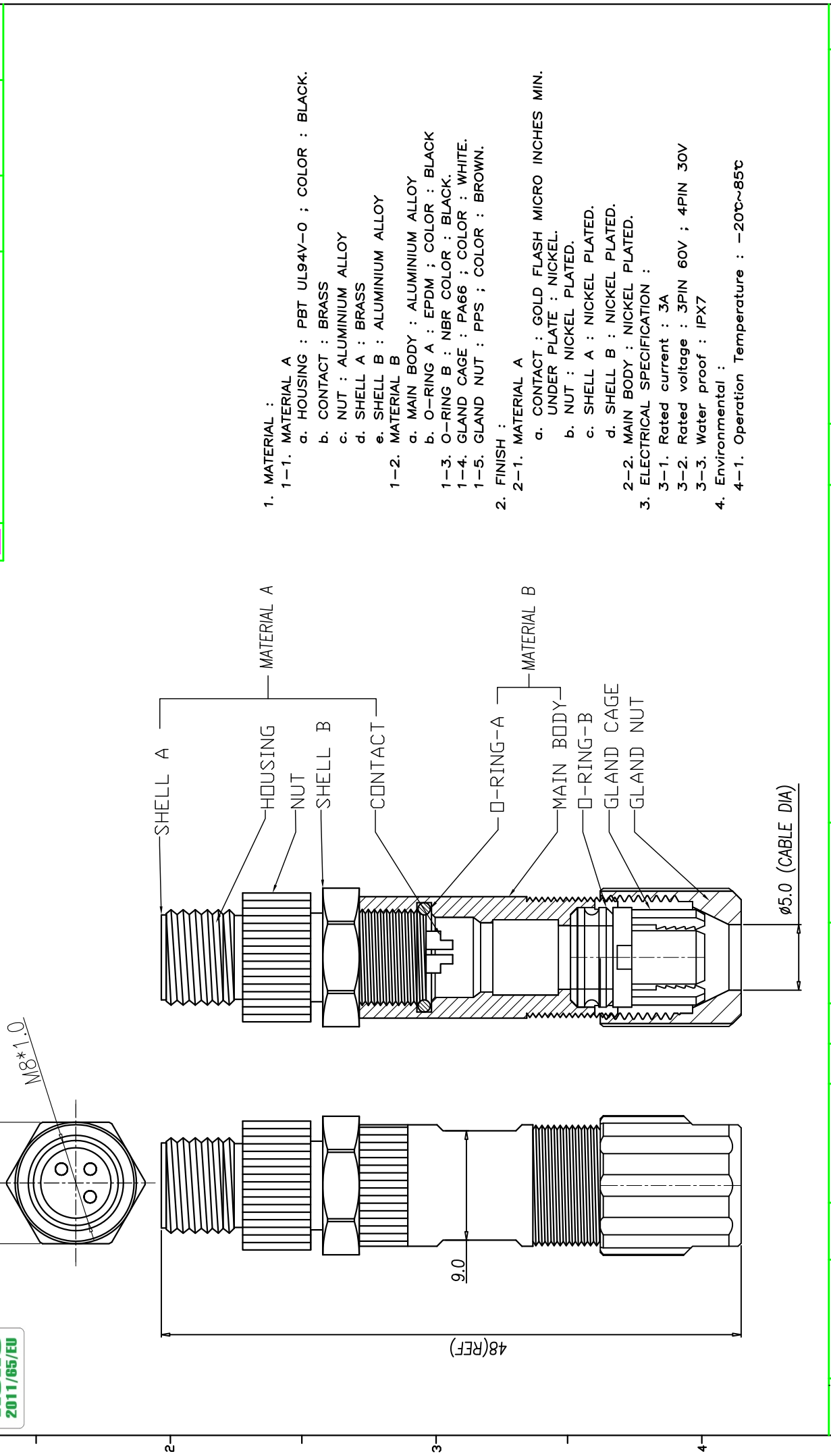


REV.	DESCRIPTION	APPL. BY	DATE	ECN NO.
A	RELEASE	KUNG	2017.02.08	
B				
C				

DRAW	Ku Chou	APPVL	KUNG	TITLE	M8 3PIN MALE WATERPROOF CABLE ASSEMBLY TYPE.	SHEET	⊕
CHECK	Enly Suen			PART NO.	WP-03M2-81-11	VERSION	A
				DWG NO.	QC8034		



1. MATERIAL :
- 1-1. MATERIAL A
 - a. HOUSING : PBT UL94V-0 ; COLOR : BLACK.
 - b. CONTACT : BRASS
 - c. NUT : ALUMINIUM ALLOY
 - d. SHELL A : BRASS
 - e. SHELL B : ALUMINIUM ALLOY
 - 1-2. MATERIAL B
 - a. MAIN BODY : ALUMINIUM ALLOY
 - b. O-RING A : EPDM ; COLOR : BLACK
 - 1-3. O-RING B : NBR COLOR : BLACK.
 - 1-4. GLAND CAGE : PA66 ; COLOR : WHITE.
 - 1-5. GLAND NUT : PPS ; COLOR : BROWN.
2. FINISH :
- 2-1. MATERIAL A
 - a. CONTACT : GOLD FLASH MICRO INCHES MIN. UNDER PLATE ; NICKEL.
 - b. NUT : NICKEL PLATED.
 - c. SHELL A : NICKEL PLATED.
 - d. SHELL B : NICKEL PLATED.
 - 2-2. MAIN BODY : NICKEL PLATED.
3. ELECTRICAL SPECIFICATION :
- 3-1. Rated current : 3A
 - 3-2. Rated voltage : 3PIN 60V ; 4PIN 30V
 - 3-3. Water proof : IPX7
4. Environmental :
- 4-1. Operation Temperature : -20c~85c

ROHS 2011/65/EU	10.00	M8*1.0	48(REF)	9.0	5.0 (CABLE DIA)	TOLERANCE	x xx xxx xxxx xxxxx	+0.20 +0.10 +0.05 +0.03 ±0.03	° " " " °	UNIT	mm	SCALE	1:1	APPVL	KUNG	48(REF)	9.0	5.0 (CABLE DIA)	TOLERANCE	x xx xxx xxxx xxxxx	+0.20 +0.10 +0.05 +0.03 ±0.03	° " " " °
--------------------	-------	--------	---------	-----	-----------------	-----------	---------------------------------	---	-----------------------	------	----	-------	-----	-------	------	---------	-----	-----------------	-----------	---------------------------------	---	-----------------------