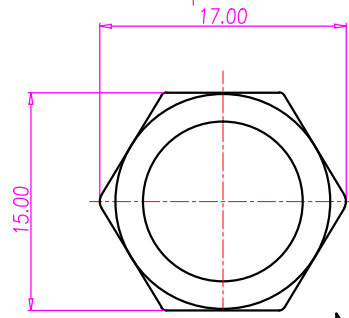
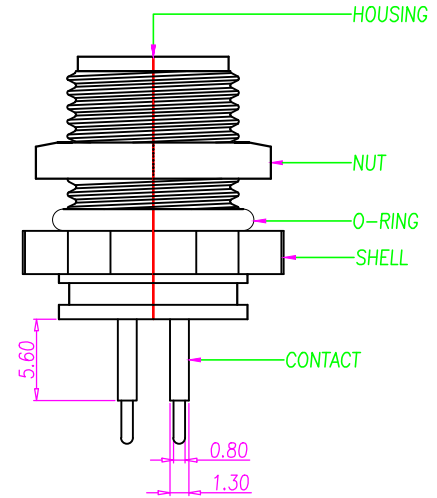
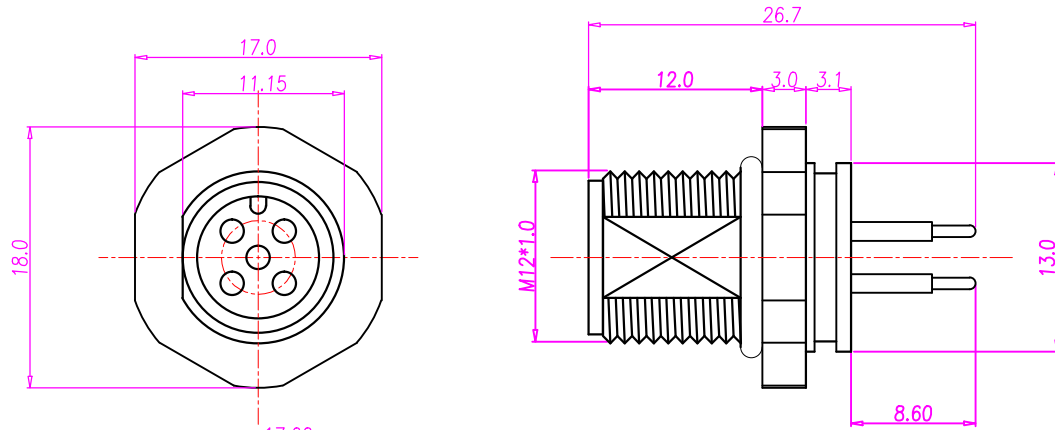
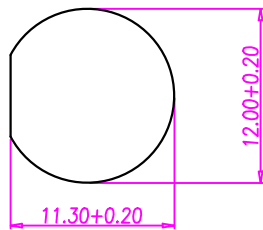
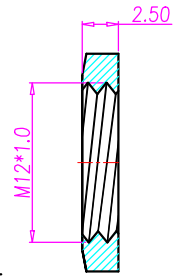




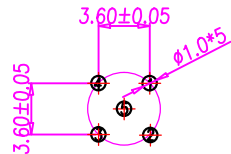
REV.	DESCRIPTION	APPVL. BY	DATE	ECN NO.
A				
B				
C				



NUT



PANEL CUT-OUT



RECOMMENDED P.C.B LAYOUT

- MATERIAL :
  - HOUSING : PBT UL94V-0 ; COLOR : BLACK
  - CONTACT : BRASS
  - NUT : BRASS
  - O-RING : EDPM
  - SHELL : BRASS
  - EPOXY Base :EF400A&EF400B.COLOR:BLACK
- FINISH :
  - CONTACT : 30 MICRO INCHES MIN. GOLD PLATED UNDER PLATE : NICKEL
  - NUT : NICKEL PLATED
  - SHELL : NICKEL PLATED
- ELECTRICAL SPECIFICATION :
  - Rated current : 5A
  - Rated Voltage : 125V
  - Water proof: IPX7
- Environmental :
  - Operation Temperature : -40℃~85℃

DRAW	APPVL	UNIT	mm	TOLERANCE	JKL TECHNOLOGY CO., LTD.	TITLE	M12 5PIN MALE PANEL MOUNT, DIP		SHEET
CHECK		SCALE	1:1	ANGULA ±2°		PART NO.	WP-05M2-31	DWG NO.	QC3991