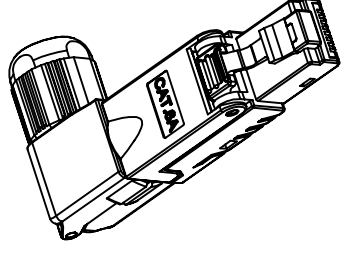
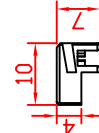
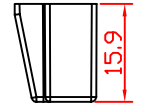
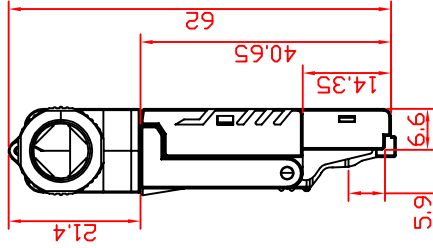
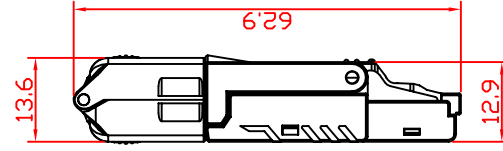
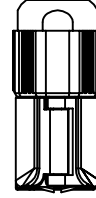
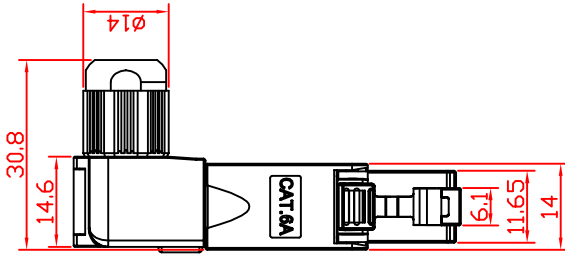
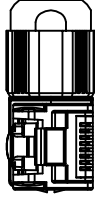




\* SUBJECT TO CHANGE WITHOUT NOTICE



NOTES:

ELECTRICAL:

1. VOLTAGE RATING: 125 VAC RMS
2. CURRENT RATING: 1.5AMP
3. CONTACT RESISTANCE: 20MΩ MAX
4. INSULATION RESISTANCE: 1000 MEGOHMS MIN @500 VDC
5. DIELECTRIC STRENGTH: 750 VAC RMS 60Hz, 1MIN

ENVIRONMENTAL:

1. STORAGE: -40 °TO +85°
2. OPERATION: 0 °TO 70°

MECHANICAL:

1. HOUSING MATERIAL: ZINC ALLOY
2. IDC MATERIAL: PC
3. PCB MATERIAL: FR-4 T=1.6mm
4. CONTACT MATERIAL: PHOSPHOR BRONZE  
STAMP PIN 0.30mm
5. IDC LIFE: 200 TIMES MIN
6. WIRE: AWG 23-26

REV.	DESCRIPTION	APPROVED BY	DATE	ECN NO.
A	RELEASE	KUNG	2019.12.11	
B				
C				

DRAWN	Ku Chou	APP'D	KUNG	UNIT	MM	TOLERANCE	±0.20 ±0.10 ±0.05 ±0.03	ANGULA	±1°	JKL TECHNOLOGY CO., LTD.	TITLE	R/A CAT. 6A SHIELDED PLUG, TOOLEST TYPE .	SHEET	1
CHK'D	Enly Suen			SCALE	1:1						PART NO.	RJ-S06A-88-RA	VERSION	A
											DWG NO.	KJ-AP080-S6A		