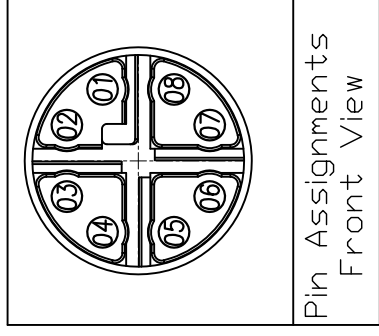
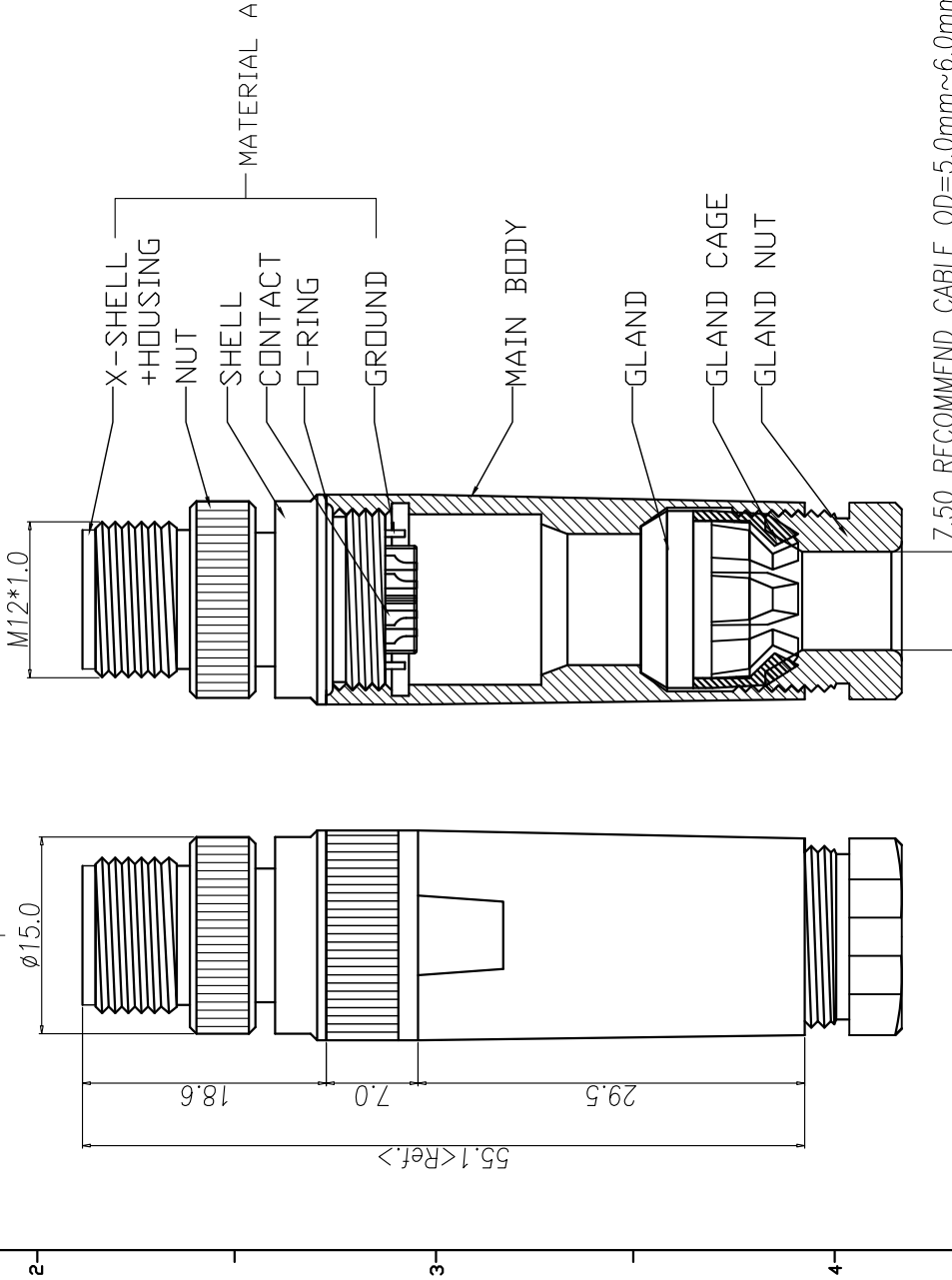
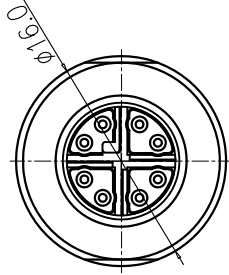




* SUBJECT TO CHANGE WITHOUT NOTICE



Pin Assignments
Front View

1. MATERIAL :
 - 1-1. MATERIAL A : PBT UL94V-0 ; COLOR : BLACK.
 - a. HOUSING : BRASS
 - b. CONTACT : ALUMINIUM ALLOY
 - c. NUT : ALUMINIUM ALLOY
 - d. SHELL : BRASS
 - e. O-RING : EPDM ; COLOR : BLACK
 - f. GROUND : BRASS
 - g. X-SHELL : Zn ALLOY
- 1-2. MAIN BODY : ALUMINIUM ALLOY
- 1-3. GLAND : SILICONE ; COLOR : BLACK.
- 1-4. GLAND CAGE : POM ; COLOR : WHITE.
- 1-5. GLAND NUT : ALUMINIUM ALLOY
2. FINISH :
 - 2-1. MATERIAL A :
 - a. CONTACT : 10u" GOLD PLATED
 - b. NUT : SATIN NICKEL PLATED.
 - c. SHELL : NICKEL PLATED.
 - d. GROUND : NICKEL PLATED.
 - e. X-SHELL : NICKEL PLATED.
 - 2-2. MAIN BODY : SATIN NICKEL PLATED.
 - 2-3. GLAND NUT : SATIN NICKEL PLATED.
3. ELECTRICAL SPECIFICATION :
 - 3-1. Rated current : 0.5A
 - 3-2. Rated voltage : 48V
 - 3-3. Water proof : IP67
4. Environmental :
 - 4-1. Operation Temperature : -40°C~85°C

REV.	DESCRIPTION	APPROVED BY	DATE	ECN NO.
A	RELEASE	KUNG	15/02/22	
B				
C				

DRAWN	Ku Chou	APP'D	KUNG		UNIT	mm	TOLERANCE	X ±0.20 XX ±0.10 XXX ±0.05 XXXX ±0.03 ANGULA ±1°			JKL TECHNOLOGY CO., LTD.	TITLE	M12 8PIN(M) X-coded Assembly type	SHEET	1/2
CHK'D	Emily Suen				SCALE	1:1						PART NO.	WP-08M2-149-11	VERSION	A
												DWG NO.	QC10992		